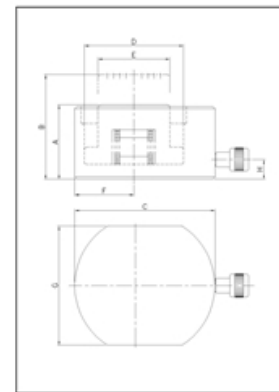


Low Profile Pad Cylinders

- Capacity: 5 - 150 tonnes.
- Stroke: 6 - 16mm.
- Maximum Pressure: 700 Bar.
- Hydraulic Coupler: TBC 381F(PT3/8).
- TECPOS low profile cylinders are designed for use where there is a minimum of clearance for insertion of Cylinders
- From 10 to 150 tones capacity single-acting spring return.

Understanding the Model No: TSLC-1011

- **T** - TECPOS
- **SLC** - Low Profile Cylinder
- **10** - Capacity, 10ton
- **11** - Stroke, 11mm



Dimensions

Model	Cyl. Cap. (tons)	Stroke (mm)	Cyl. Effective Area (cm ²)	Oil Cap. (cc)	Retracted Height A	Extended Height B	Cyl. Out Dia. C	Cyl. Bore Dia. D	Piston Rod Dia. E	Plunger to Base F	Cylinder Dims G	Base to inlet port H	Weight (kgs)	Pump
TSLC-56	5	6	6.16	3.7	40	46	60	28	25	22	42	21	0.8	1B
TSLC-1011	10	11	15.2	16	45	56	85	44	38	29	56	21	1.5	1B
TSLC-2011	20	11	28.3	31	52	63	102	60	54	42	76	21	2.7	1B
TSLC-3013	30	13	41.85	53	59	72	115	73	64	48	95	21	4.2	1B
TSLC-5016	50	16	60.8	99	67	83	139	88	75	58	114	21	6.9	1C
TSLC-7516	75	16	103.87	164	79	95	165	115	85	70	140	21	11	1C
TSLC-10016	100	16	126.7	203	86	102	180	127	95	78	152	25	14.7	1C
TSLC-15016	150	16	201	317	100	116	215	160	115	97	190	24	25	1C